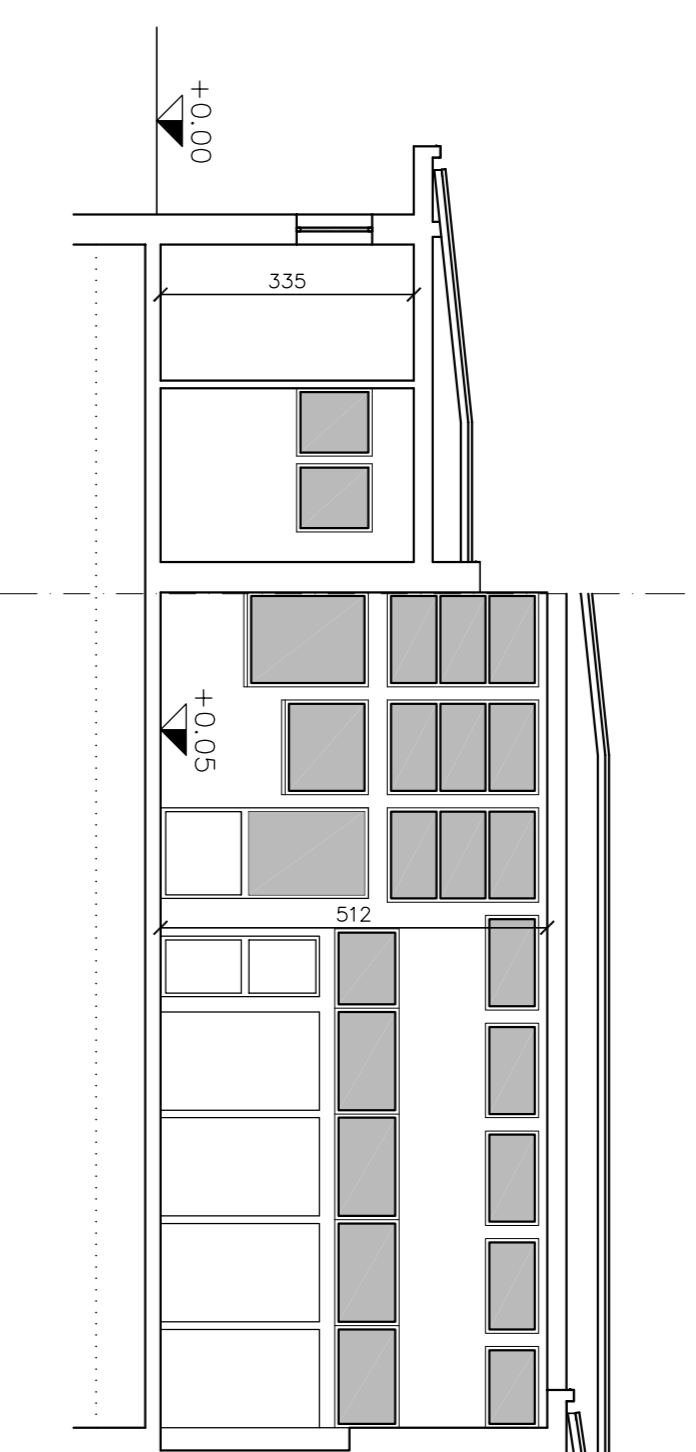
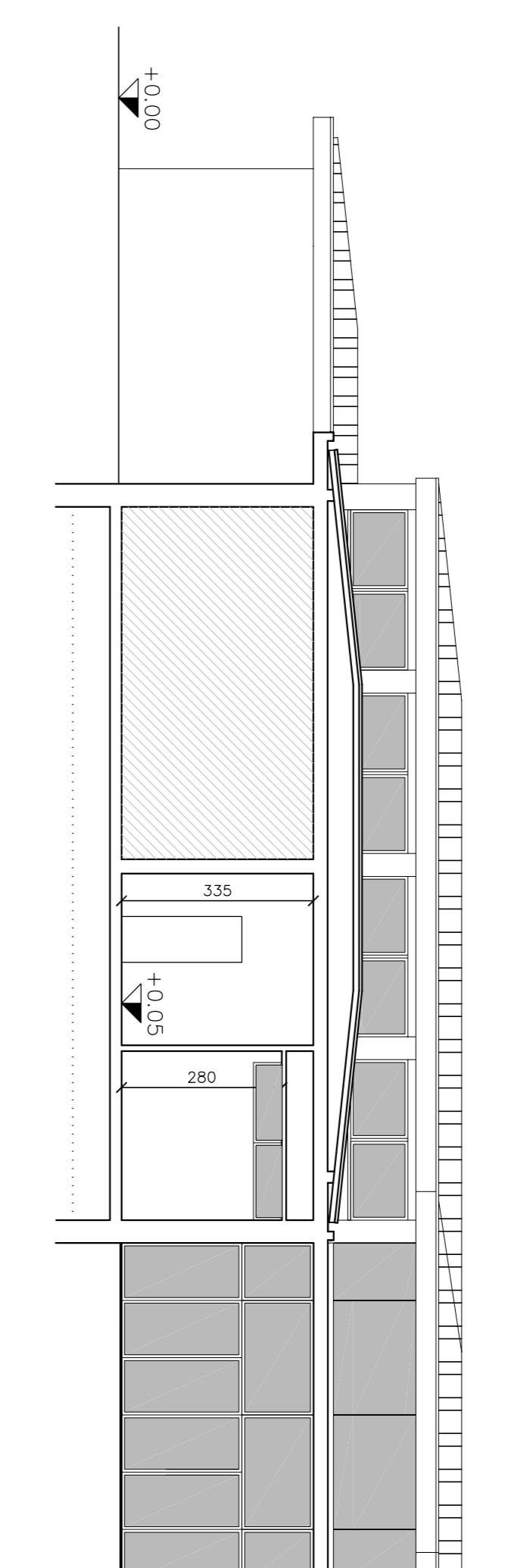


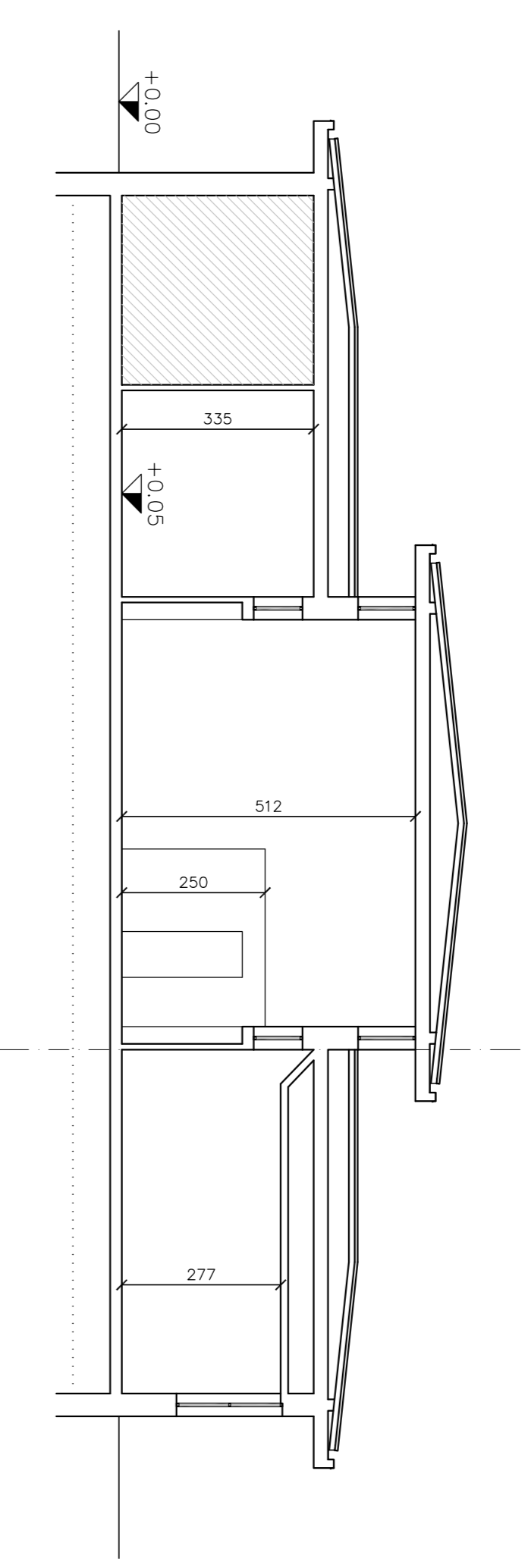
SEZIONE A - A



SEZIONE B - B

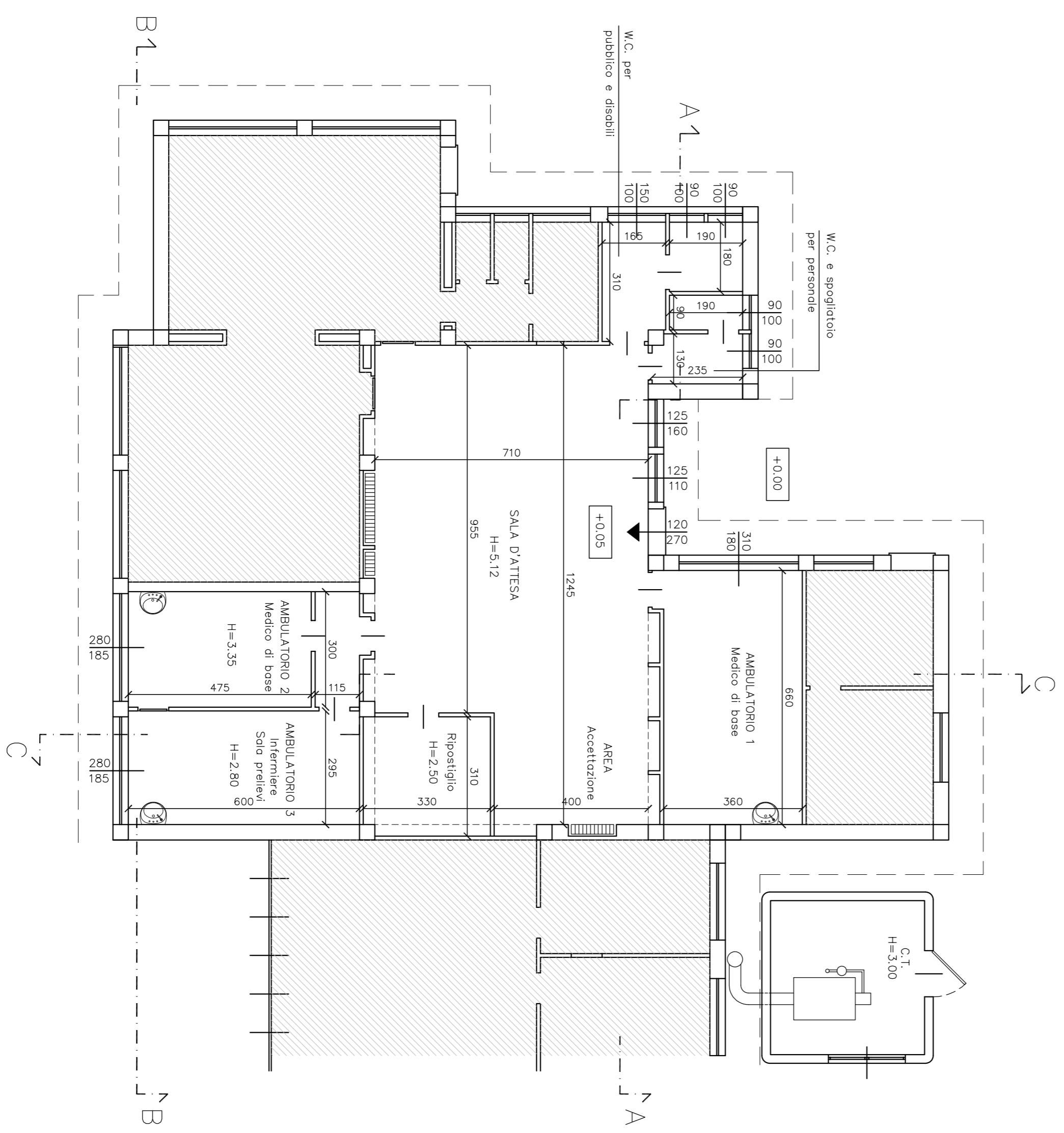
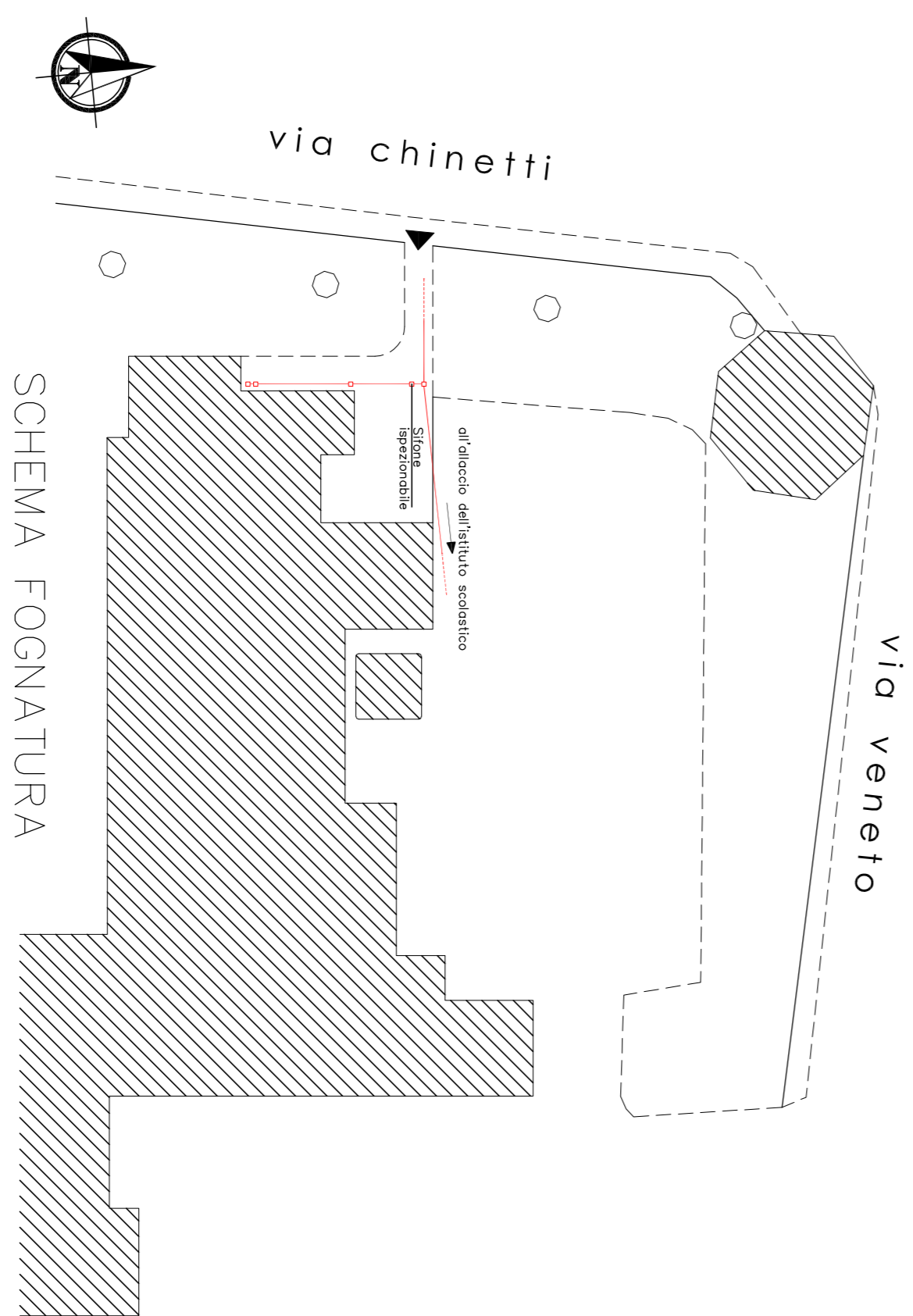


SEZIONE C - C

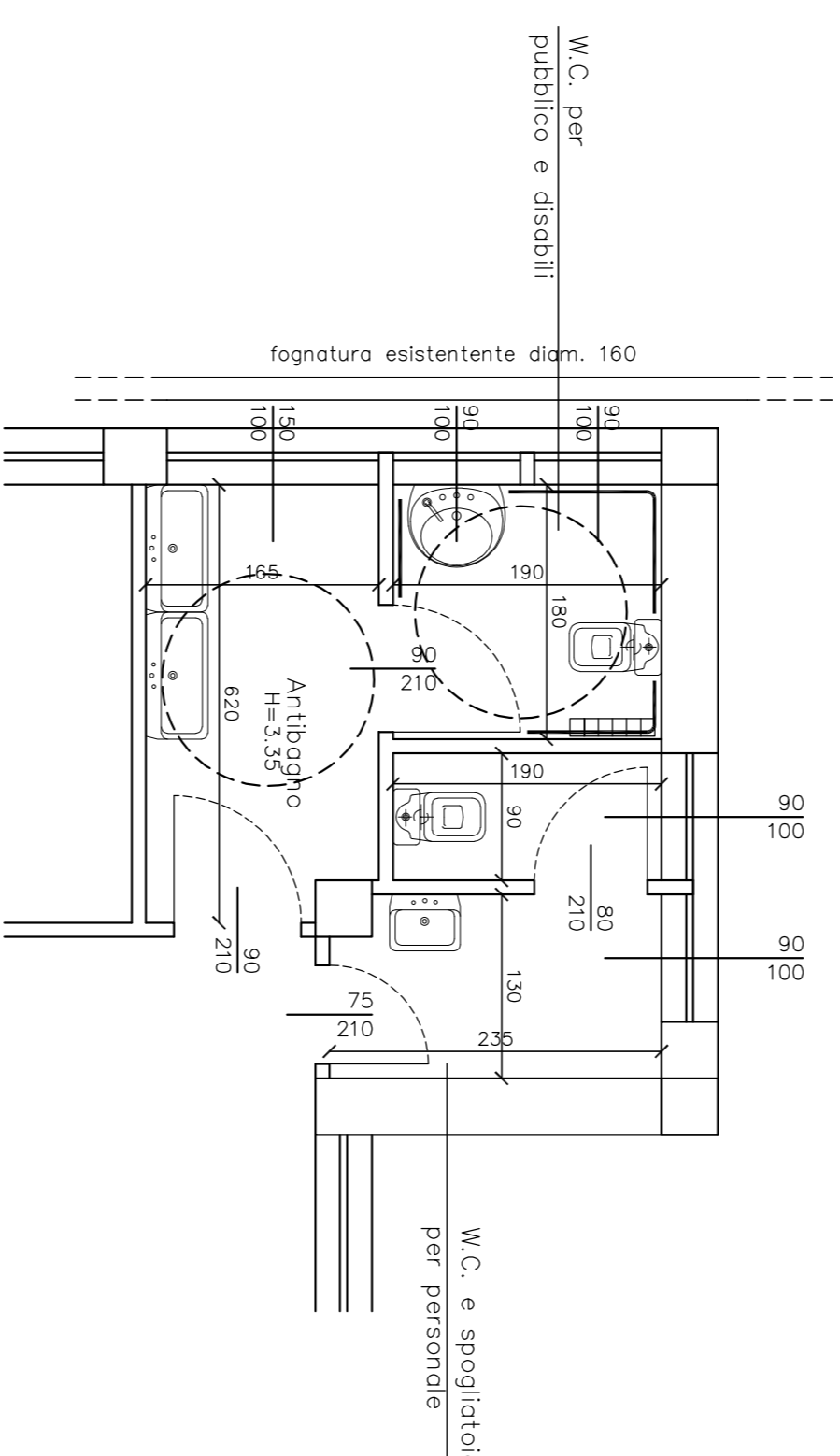


VERIFICA RAPPORTI AEROLUCCMINANTI

LOCALI	SUPERFICI	RAPPORTI
Sala d'attesa	finestre (1,15 x 0,60 x 22) + (1,50 x 1,15) + (1,50 x 1,00) locce 12,45 x 7,10)	$\frac{88,41}{88,40} = \frac{1}{4,80} > \frac{1}{8}$
Ambulatorio 1	finestre 3,10 x 1,80 locce 6,60 x 3,80	$\frac{5,58}{23,76} = \frac{1}{4,26} > \frac{1}{8}$
Ambulatorio 2	finestre 2,80 x 1,85 locce 4,75 x 3,00	$\frac{5,18}{14,25} = \frac{1}{2,75} > \frac{1}{8}$
Ambulatorio 3	finestre 2,80 x 1,85 locce 6,00 x 2,95	$\frac{5,18}{17,70} = \frac{1}{3,42} > \frac{1}{8}$
Antibagno	finestre 1,50 x 1,00 locce (2,80 x 1,65) + (1,20 x 0,30)	$\frac{1,50}{4,98} = \frac{1}{3,32} > \frac{1}{8}$
WC pubblico e disabili	finestre (1,00 x 0,90) + (1,00 x 0,90) locce 1,50 x 1,90	$\frac{1,80}{3,42} = \frac{1}{1,90} > \frac{1}{8}$
WC personale	finestre 1,00 x 0,90 locce 1,90 x 0,90	$\frac{0,90}{1,71} = \frac{1}{0,53} > \frac{1}{8}$
Spogliatoio personale	finestre 1,00 x 0,90 locce (2,05 x 1,30) + (1,00 x 0,30)	$\frac{0,90}{2,97} = \frac{1}{3,30} > \frac{1}{8}$



particolare SERVIZI IGIENICI sc.1:50



COMUNE DI SOLBIATE ARNO
AMBULATORI COMUNALI
PLANIMETRIA, PIANTE e SEZIONI

tavola	scalo	data
	scalo 1:100 scalo 1:500	Novembre 2022